

LUXURY FAMILY

Luxury family wildlife safari



Luxury Family Safari - 14 Days - South Africa, Botswana & Zimbabwe

DAY ONE - Arrival into Johannesburg

On arrival in Johannesburg, you will be met and transferred to your hotel where you will stay for ONE night on a B&B basis.

***Should your flight arrive in time to connect on the daily scheduled charter flight to Kruger, this overnight in Johannesburg can be omitted.*

DAY TWO - Johannesburg / Kruger, Mabeleli Game Reserve

After a leisurely wake up, enjoy breakfast and check out. Depart Johannesburg airport for Mabeleli Reserve airstrip. On arrival into Mabeleli, a representative from Tintswalo Safari Lodge will meet you and transfer you to camp where you are booked for THREE nights on a fully inclusive basis, in the exclusive Presidential Lodge.

DAY THREE & FOUR - Mabeleli Game Reserve

A typical day in a safari camp would be as follows:

- 05h30 Wake up call, continental breakfast of danish pastries and coffee
- 06h00 Morning game drive or walk
- 09h00 Return to camp for a late breakfast or brunch.
- 13h00 Lunch
- 15h00 Tea and cakes and then afternoon game activity
- 19h30 Dinner. Guests who wish to go out on a 'night eyes' safaris can do so.

DAY FIVE - Kruger, Mabeleli Game Reserve / Johannesburg / Botswana

After an early game drive and breakfast, charter flight back to Johannesburg OR Thambo airport. Check into Maun flight. Arrival at the Maun Airport and board your light aircraft charter to Seba Camp, Okavango Delta. The flight will be approx 35 mins. On arrival at the camp airstrip you will be met and transferred into Camp in an open 4x4 vehicle. Here you will check in for THREE nights on a fully inclusive basis.

DAY SIX & SEVEN

A typical day in a Delta camp would be as follows:

- 05h00 Early morning wake up. Light breakfast in the main area.
- 06h00 Depart on activity, game drives in open 4x4 vehicles or game walk.
- 10h30 Return to camp for brunch and leisure time.
- 15h00 Afternoon tea in the main area
- 15h30 Depart on PM game activity, game drives in open 4x4 vehicles.
- 18h30 Return to camp just after sunset in line with National Park regulations
- 20h00 3 course dinner, followed by relaxing on the deck around the fire.

DAY EIGHT - Okavango Delta, Seba Camp / Linyanti, Selinda Camp

After breakfast, a short charter hop to Selinda Camp - Linyanti (approx 45mins.) Check into Selinda Camp for TWO nights on a fully inclusive Basis.

DAY NINE - similar to day six and seven

Day TEN - Linyanti, Selinda Camp/Victoria Falls, Elephant Camp

After breakfast, a 80min charter flight to Kasane. At Kasane airport you meet your road transfer to Victoria Falls. The drive to Victoria Falls takes about an hour. You will be required to buy a SINGLE entry visa into Zimbabwe - US\$ 30pp (not applicable to children U18 travelling with their parents/guardian).

Welcome at Elephant Camp where you will check in for TWO nights on a fully inclusive basis. Included in your stay is a Guided tour of the magnificent Rainforest and Victoria Falls, plus a relaxing afternoon sunset cruise on the Zambezi River.

Day TWELVE - Victoria Falls, Elephant Camp / Cape Town, The Cape Grace

After a leisurely breakfast, check out and transfer to the Victoria Falls Airport. Check in for the commercial flight to Johannesburg. Arrive into Johannesburg, clear customs and immigration into South Africa and walk across to the Domestic Terminal for your flight to Cape Town.

Arrival in Cape Town will be late evening where you will be met and transferred to The Cape Grace where you will check in for THREE nights, DBB. You have two FULL days to do optional activities whilst in Cape Town. Our specialty is Fully Inclusive Private Touring which is completely flexible and allows us to focus on specific interests and preferences.

Family Full Day Winelands - Glass-blowing studio, animal petting-farm, butterfly world, close up encounters with Cheetah, Eagle Encounters and Raptor Lunch

Family Full Day Peninsular - Choice of one of these morning activities (Age specific) - Sea cruise to Duiker Island to view Cape Fur Seals, Kayak paddle to Boulders Beach for upclose encounters with African Penguin Colony and encounter with Baboons. Choice of one of these afternoon activities - (age specific) - Ostrich Farm, Imhoff snake and reptile park, and World of Birds. Scenic views include Chapmans' Peak Drive, False Bay and Cape Point.

Family Full Day with the Animals - Cheetah Outreach, Eagle Encounters, Boulders Beach with the penguins, seals and dolphins.

Family Half Day City and Mountain tour - Table Mountain, Cape Malay Quarters, SA Museum, Cultural History Museum, Two Oceans Aquarium

Family Full Day Lighthouse tour - Chapmans' Peak, Noordhoek Farm Village, Kommetjie Slangkop Lighthouse.

DAY THIRTEEN & FOURTEEN - Cape Town

Full day in Cape Town with a private vehicle and guide. Tours to be tailor made.

DAY FIFTEEN - Departure for home

Depart Cape Town International Airport for your international flight home.

PRICES AVAILABLE ON REQUEST

What is Included:

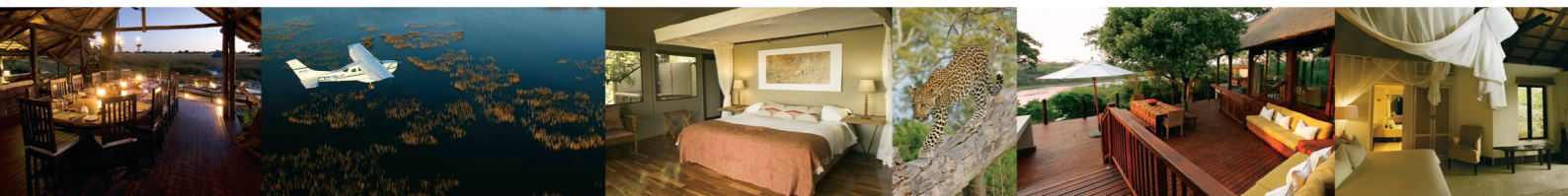
1. Accommodation for 12 nights on a shared basis
2. All light air transfers between camps as specified on a seat in plane basis.
3. Meals, activities, national parks fees, drinks as specified in the itinerary.
4. Specialist Guide Services
5. Laundry at all camps only
6. All Government Levy's and taxes currently in South Africa & Botswana, subject to change without notice.

What is excluded:

1. All international and regional commercial airline flights.
2. All items of a personal nature i.e. additional meals, activities not specified, curios, laundry at hotels, etc.
3. All relevant visa fees and departure taxes.
4. All drinks in the city centers and premium labels in camps.
5. All gratuities and tipping.
6. Specialist guide costs - to be quoted on request.

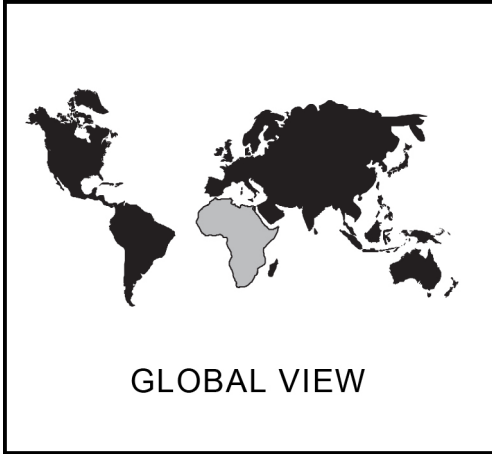
ETA Terms & conditions and pre-tour information available on quotation.

For all enquiries and quotations contact: enquiries@exclusivetouchafrica.net or go to www.exclusivetouchafrica.net





VISITOR INFORMATION TO SOUTHERN AFRICA



SOUTH AFRICA CLIMATE

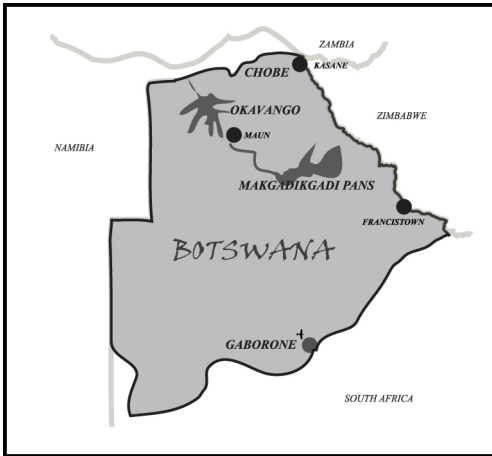
South Africa enjoys a high number of clear, sunny days. Summer in South Africa lasts from October until March. Despite regional differences, South Africa's climate is generally mild throughout the year. Snowfall is limited to the highest mountain peaks, and it is a relatively dry country with a mean annual rainfall of 502mm.

Temperature (°F) - These are the average lows and highs .

	Jan	Feb	Mar	Apr	May	June	July	Aug	Sep	Oct	Nov	Dec
JNB	59/79	57/77	55/75	52/72	46/66	41/61	41/61	45/66	48/72	54/75	55/77	57/77
DBN	70/82	70/82	68/82	63/79	55/75	50/73	50/73	54/73	59/73	63/75	64/77	68/81
CPT	61/79	59/79	57/77	54/73	50/68	46/64	45/63	45/64	46/66	50/70	55/75	59/77

Rainfall (inches). This varies according to the year and where you are.

	Jan	Feb	Mar	Apr	May	June	July	Aug	Sep	Oct	Nov	Dec
JNB	4.41	3.78	2.91	2.40	0.90	0.31	0.31	0.19	0.11	2.71	4.60	4.29
DBN	5.12	4.49	5.31	4.21	2.12	1.22	1.41	1.69	2.40	3.90	4.49	4.60
CPT	0.59	0.70	0.70	1.97	3.54	3.34	3.54	3.15	1.97	1.41	0.51	0.59



BOTSWANA CLIMATE

Rainfall in the Delta may affect water levels and thus have an impact on mekoro trips. Moremi does however have land and water based activities. The best time of year to visit is July through January.

Temperature (°F) - These are the average lows and highs

	Jan	Feb	Mar	Apr	May	June	July	Aug	Sep	Oct	Nov	Dec
Maun	66/90	66/88	64/88	57/88	48/82	43/77	43/77	48/82	55/91	64/95	66/93	66/90

Rainfall (inches). This varies according to the year and where you are.

	Jan	Feb	Mar	Apr	May	June	July	Aug	Sep	Oct	Nov	Dec
Maun	4.33	3.15	2.75	0.98	0.27	0.11	0	0	0	1.18	1.97	3.74



ZIMBABWE CLIMATE

September – October is very hot and dry. November – March is considered the rainy season. The winter months have cold frosty nights but during the day temperatures are mild with little rain.

Temperature (°F) – These are the average lows and highs

	Jan	Feb	Mar	Apr	May	June	July	Aug	Sep	Oct	Nov	Dec
VFalls	63/90	63/86	64/88	57/84	50/84	45/77	43/77	46/82	57/91	64/93	64/88	63/88

Rainfall (inches). This varies according to the year and where you are.

	Jan	Feb	Mar	Apr	May	June	July	Aug	Sep	Oct	Nov	Dec
VFalls	8.47	7.28	3.94	1.77	0.19	0.11	0.03	0.11	0.15	0.78	3.94	7.48

- White Water Rafting - Does not generally run in the high water season (Mar-Jul), but does depend on the amount of rainfall during the wet season (Nov-Feb).
- During the wet months (Nov-Feb) the canoeing can be affected by the rains, and camping can be unpleasant.
- The best time to visit is from April to October.