

ZIMBABWE

Zimbabwe Highlights - 10 Days - Zimbabwe

DAY ONE - Johannesburg/Victoria Falls/Hwange

Arrival in Victoria Falls, met at the Victoria Falls Airport and transfer to Hwange National Park. Check in to The Hide Camp for THREE nights. Enjoy lunch on arrival before a siesta and afternoon game activity and sunset
Dinner at leisure
Overnight: The Hide Camp

Includes: Full Board, up to 4 game activities per day, teas/coffee, house wines during dinner, local drinks, laundry, return transfers.

Excludes: National Parks fees payable per day in camp, personal expenses, gratuities
www.thehide.com

DAY TWO and THREE - Hwange

2 full days in camp to enjoy up to 4 game activities per day, game drive, walks, sit in a hide, night drive.
Includes a Romantic bush dinner and complimentary bottle of bubbly.

DAY FOUR - Hwange/Kariba

After breakfast, check out and charter from Hwange to Bumi Hills, Kariba. Check in to Bumi Hills for THREE nights on a full board and activities rate. Enjoy a light lunch on arrival and a siesta before the afternoon game activity of choice.

Dinner at leisure
Overnight: Bumi Hills Safari Lodge

Includes: Full Board, 2 scheduled game activities per day, return transfers.

Excludes: National Parks fees payable per day, drinks, laundry, personal expenses, gratuities
www.bumihills.com

DAY FIVE and SIX - Lake Kariba

Full days at the resort to enjoy 2 game activities per day, walks, fishing, drives, game cruises, night drives.

Includes a complimentary couples' massage during your stay.

DAY SEVEN - Lake Kariba/Victoria Falls

After breakfast transfer to the airstrip for the light charter flight to Victoria Falls. On arrival, transfer to The Elephant Camp where you check in for THREE nights. Lunch on arrival and all local drinks included. Afternoon to relax or partake in an optional activity.

Dinner at the camp including all local drinks
Overnight: The Elephant Camp
www.theelephantcamp.com

DAY EIGHT and NINE - Victoria Falls

Full days to enjoy Victoria Falls and its myriad of activities. Optional activities include white water rafting, gorge swing, canoeing, flights over the falls in a helicopter, fishing, visit to Livingstone Island and swimming in Devils' Pool, Elephant Back Safari, Walk with the lions – to name a few. All activities can be booked on in Victoria Falls.

Includes: All meals and all local drinks
Includes a Complimentary Sunset Cruise.

DAY TEN - Victoria Falls/Johannesburg

After breakfast transfer to the Victoria Falls Airport for flight out to Johannesburg/next destination.

PRICES AVAILABLE ON REQUEST

What is Included:

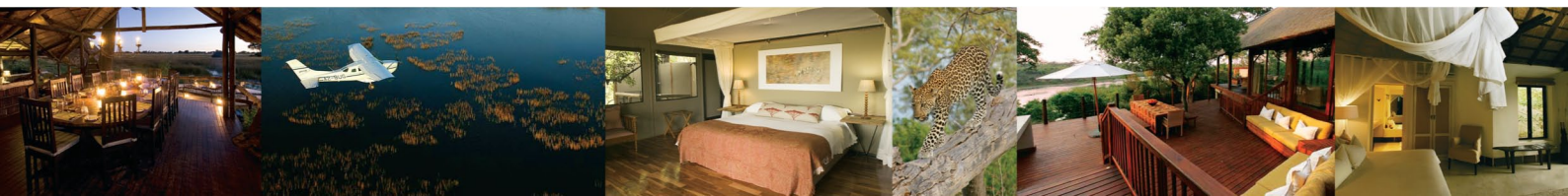
1. Accommodation for 9 nights on a shared basis
2. Meals as specified in the itinerary.
3. Drinks as specified
4. All game activities as specified.
5. Excursions as specified in the itinerary, including all entrance fees where applicable. Entrance fees are based on the current prices and are subject to change.
6. All transfers as specified in the itinerary.
7. Services of the lodge guide's and staff.
8. Meet and greet services as specified in the itinerary.
9. Transportation by luxury, air-conditioned coach where applicable.
10. Light aircraft charters - where applicable.
11. Laundry at selected camps.
12. Full bar and complimentary mini bar at The Elephant Camp.
13. All government levy's and taxes currently in Zimbabwe.

What is excluded:

1. All items of a personal nature i.e. additional meals, activities not specified, curios etc.
2. All relevant visa fees and departure taxes.
3. All gratuities and tipping.
4. All portering in camps and hotels.

ETA Terms & conditions and pre-tour information available on quotation.

For all enquiries and quotations contact: enquiries@exclusivetouchafrica.net or go to www.exclusivetouchafrica.net





VISITOR INFORMATION TO SOUTHERN AFRICA



ZIMBAWE CLIMATE

September – October is very hot and dry. November – March is considered the rainy season. The winter months have cold frosty nights but during the day temperatures are mild with little rain.

Temperature (°F) – These are the average lows and highs

	Jan	Feb	Mar	Apr	May	June	July	Aug	Sep	Oct	Nov	Dec
VFalls	63/90	63/86	64/88	57/84	50/84	45/77	43/77	46/82	57/91	64/93	64/88	63/88

Rainfall (inches). This varies according to the year and where you are.

	Jan	Feb	Mar	Apr	May	June	July	Aug	Sep	Oct	Nov	Dec
VFalls	8.47	7.28	3.94	1.77	0.19	0.11	0.03	0.11	0.15	0.78	3.94	7.48

- White Water Rafting - Does not generally run in the high water season (Mar-Jul), but does depend on the amount of rainfall during the wet season (Nov-Feb).
- During the wet months (Nov-Feb) the canoeing can be affected by the rains, and camping can be unpleasant.
- The best time to visit is from April to October.